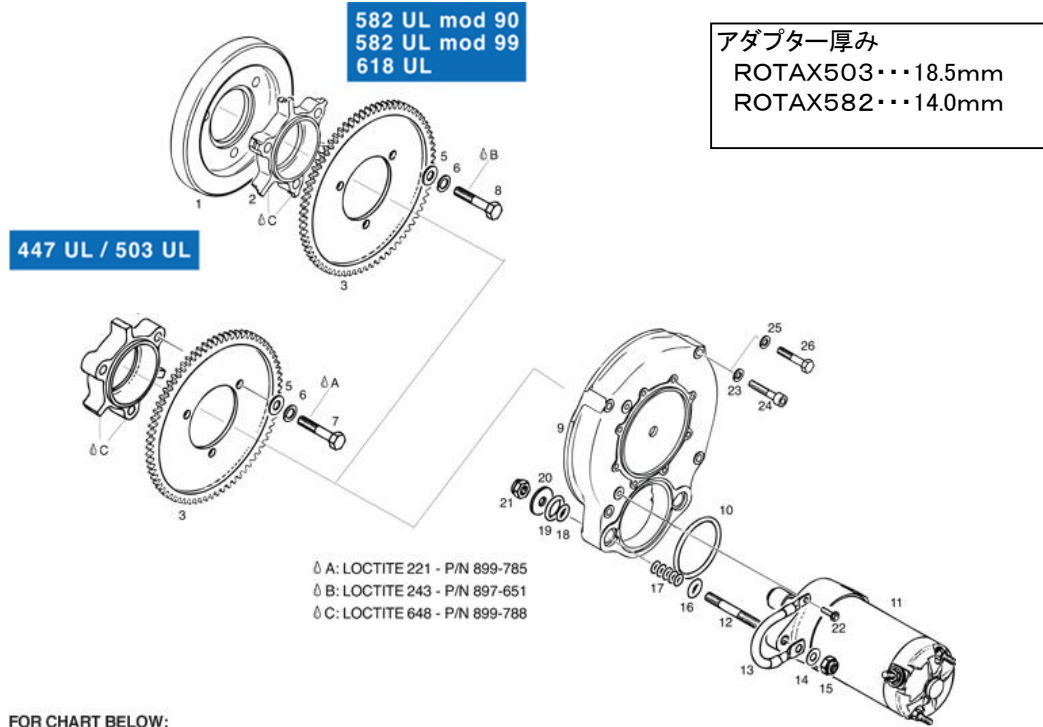


# 15<ELECTRIC STARTER>セルモーター関係

## ★Rotax Electric Starter Parts



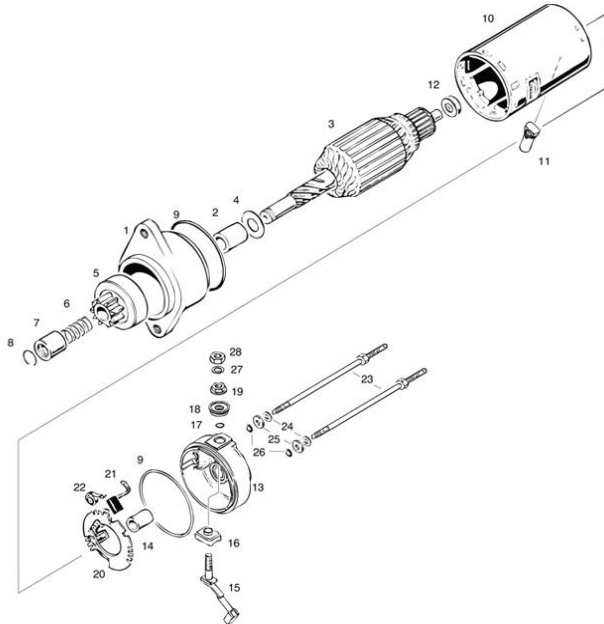
FOR CHART BELOW:

- a AB MOTORNUMBER FROM ENGINE S/N - 582 UL MOD. 90: 4,015,239
- b FROM BEGINNING OF SERIAL PRODUCTION
- c TIGHTEN TO LEAVE 1MM DISTANCE BETWEEN STARTER COVER AND ELECTRIC STARTER
- d AT 582UL MOD. 90 TUNIL ENGINE S/N 4.015.238 (WITHOUT HYDRO DAMPER ASSY.)

\* CALL FOR PRICING!

No.	Status	Part Number	Description	Qty 447	Qty 503	Qty 582 Mod. 90	Qty 582 Mod. 99	Qty 618
1		965-497	HYDRO DAMPER ASSY.,			1a	1b	1b
2		852-378	STARTER GEAR ADAPTER			1a	1b	1b
3		834-053	STARTER GEAR 61 T.,	1	1	1	1	1
4		852-370	STARTER GEAR ADAPTER	1	1			
5		250-311	WASHER 8,4 DIN 125	3	3	3	3	3
6		945-752	LOCK WASHER A8	3	3	3	3	3
7		940-490	HEX.SCREW M8X35	3	3			
8		940-616	HEX. SCREW M8X40			3	3	3
9-22		995-920	ELECTRIC STARTER SET	1	1	1	1	1
9		910-731	STARTER COVER	1	1	1	1	1
10		850-390	O-RING 60-4	1	1	1	1	1
11		995-430	ELECTRIC STARTER ASSY.,	1	1	1	1	1
12		841-950	STUD M8X43/23	2	2	2	2	2
13		966-031	MASS CABLE 80 MM ASSY.,	1	1	1	1	1
14		944-038	WASHER 8,4/14/1	1	1	1	1	1
15		942-030	LOCK NUT M8	2c	2c	2c	2c	2c
16		850-585	O-RING 8X5	2	2	2	2	2
17		230-260	O-RING 6X3	10	10	10	10	10
18		850-580	O-RING 8X4	2	2	2	2	2
19		850-590	O-RING 16-4	2	2	2	2	2
20		827-910	WASHER 8,2/26,3/2	2	2	2	2	2
23		945-751	LOCK WASHER A6 DIN 128		4			
24		241-816	ALLEN SCREW M6X40 DIN 912		4			
25		445-331	LOCK WASHER VHZ 6	4		4	4	4
26		240-631	HEX.SCREW M6X40	4		4	4	4

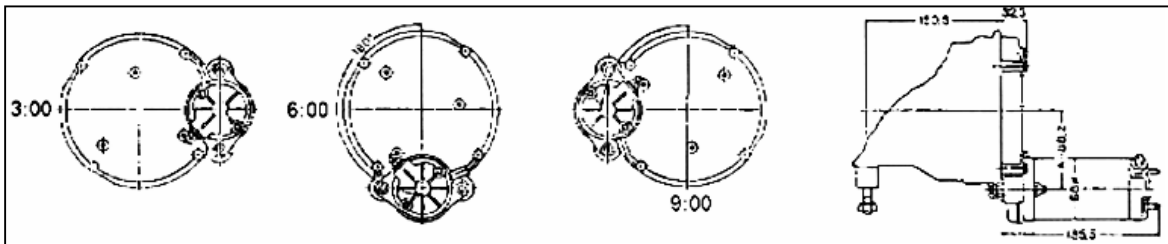
# ★Rotax Starter Moter Parts



**FOR CHART BELOW:**

- a BUSHING, NOT AVAILABLE AS SPARE PART, USE DRIVE HOUSING ASSY. 866880.
- b END FRAME WITH SLEEVE, NOT AVAILABLE AS SPARE PART, USE END FRAME ASSY. 866900.
- c BUSHING, NOT AVAILABLE AS SPARE PART, USE DRIVE HOUSING ASSY. 866900.
- d BRUSH, NOT AVAILABLE AS SPARE PART, USE BRUSH HOLDER ASSY. 866890.
- e SPRING, NOT AVAILABLE AS SPARE PART, USE BRUSH HOLDER ASSY. 866890.

No.	Status	Part Number	Description	Qty 447	Qty 503	Qty 582 Mod. 90	Qty 582 Mod. 99	Qty 618
1-26		995-430	ELECTRIC STARTER ASSY.,	1	1	1	1	1
1-2		866-880	DRIVE HOUSING ASSY.,	1	1	1	1	1
3		866-870	ROTOR ASSY.,	1	1	1	1	1
4		927-057	THRUST WASHER 15,3/24/1	1	1	1	1	1
5		866-850	OVERRUNNING-CLUTCH DRIVE ASSY.,	1	1	1	1	1
6		939-030	SPRING	1	1	1	1	1
7		927-040	STOP COLLAR	1	1	1	1	1
8		845-360	CIRCLIP	1	1	1	1	1
9		850-500	O-RING 62-1,5	2	2	2	2	2
10		866-860	YOKE ASSY.,	1	1	1	1	1
11		860-600	VENTING RUBBER	1	1	1	1	1
12		827-600	SHIM	AR	AR	AR	AR	AR
15		866-892	CARBON BRUSH WITH SCREW	1	1	1	1	1
16		260-820	ISOLATING BUSHING	1	1	1	1	1
17		230-530	O-RING 6X1,7	1	1	1	1	1
18		260-800	CONNECTOR SHEATH	1	1	1	1	1
19		242-780	COMBINED NUT M6	1	1	1	1	1
20-22		866-890	BRUSH HOLDER WITH SPRINGS	1	1	1	1	1
23		841-860	SCREW M5	2	2	2	2	2
24		945-750	LOCK WASHER A5	2	2	2	2	2
25		827-800	WASHER A 5,5 DIN 6902	2	2	2	2	2
26		850-510	O-RING 4,7 X 1,4	2	2	2	2	2
27		945-751	LOCK WASHER A6 DIN 128	1	1	1	1	1
28		242-211	HEX.NUT M6	1	1	1	1	1



※これらはスターターの取付けポジションです。取付けポジションはENGINEタイプによって異なります。

- 277. 377. 447(フリーエアエンジン).....3. 6. 9. 12時ポジション
- 377. 447. 503(強制空冷エンジン).....6. 9時ポジション
- 532(水冷エンジン).....6. 12時ポジション
- 532. 582. 618(水冷エンジン).....3. 9時ポジション

●これらのスターターセットにはスターターリレーは含まれておりますが、レギュレーター・レクチファイヤーは含まれておりませんので別ページより希望のタイプをお選び下さい。

### ☆MAG-SIDE セルモーターセット価格

(ご注文時にエンジンタイプをお知らせ下さい)

#02-995-927 ..... ¥162,390 (447. 503用)

#02-995-928 ..... ¥164,760 (582用)

### ☆MAG-Electric Starter Assy (セルモーター本体のみ)

#15-88320 ..... ¥52,300

※ Rotax純正品ではありませんが、仕様・寸法・取付等全てが同等適合致します。