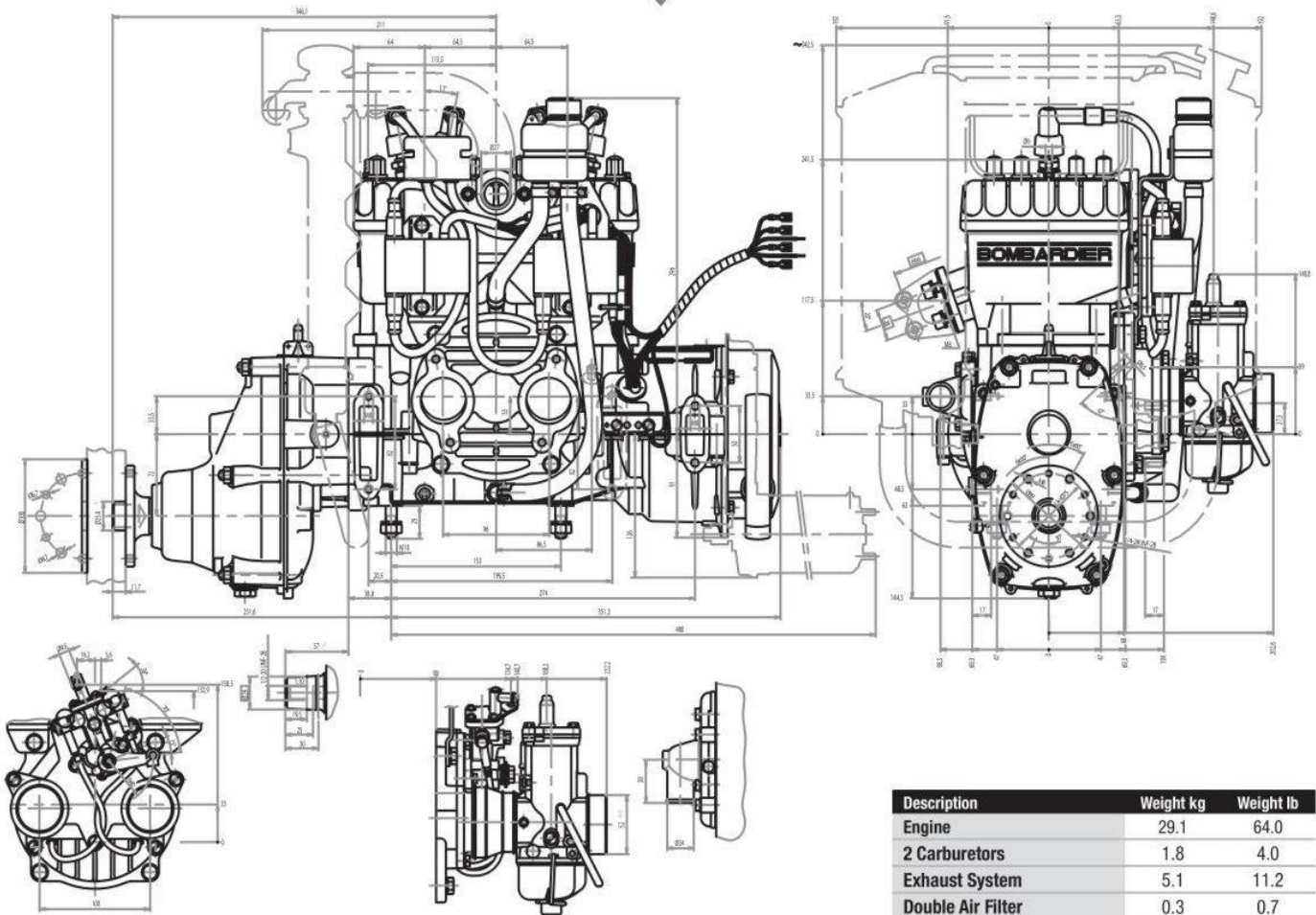


ROTAX 582 UL /65hp



Description	Weight kg	Weight lb
Engine	29.1	64.0
2 Carburetors	1.8	4.0
Exhaust System	5.1	11.2
Double Air Filter	0.3	0.7

ENGINE DATA

WEIGHT	kg	lb
engine	29.1	64.0
2 carburetors	1.8	4.0
exhaust system	5.1	11.2
electric starter	3.5	7.7
propeller speed reduction unit "B" / i = 2.58	4.5	9.9
propeller speed reduction unit "C" / i = 2.62/3.0/3.47/4.0	8.0	17.6
propeller speed reduction unit "E" / i = 2.62/3.0/3.47/4.0	11.2	24.7

VERSION	PERFORMANCE			TORQUE			MAX RPM
	kW	ft. lb.	1/min	Nm	ft. lb.	1/min	1/min
582 Mod. 99	48	65	6500	75	55.3	6000	6800

BORE		STROKE		DISPLACEMENT	
76 mm	2.99 in	64 mm	2.52 in	580 cm ³	35.4 cu. in.

FUEL	2 SUPER STROKE - MOTOROIL	MIXING RATIO
min. MON 83 RON 91* min. AKI 87*	API-TC-Classification	1:50 or optional with fresh oil pump

* leaded, unleaded, AVGAS 100LL or Ethanol 10

picture: 582 with options

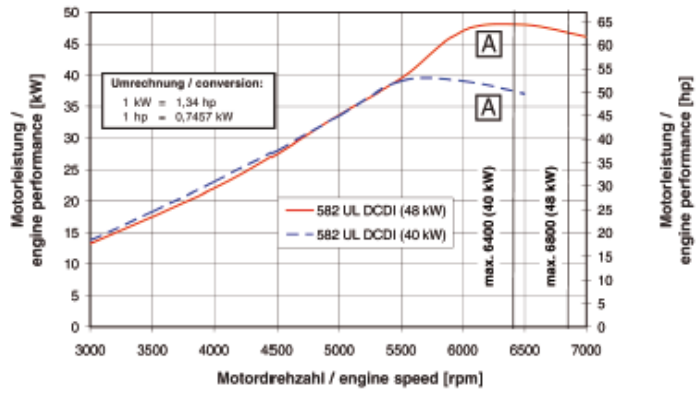
DESCRIPTION

- 2-cylinder
- 2-stroke liquid cooled engine with valve intake
- dual electronic ignition
- integrated water pump and thermostat
- exhaust system
- carburetors

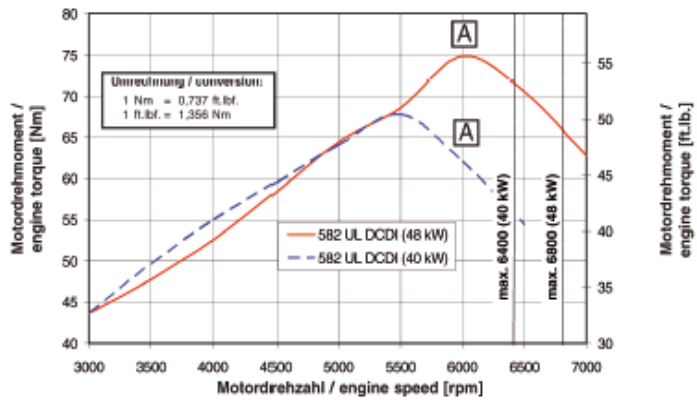
FACTS

Over 30.000 units of this popular engine have been sold. This engine is regarded for its easy maintenance.

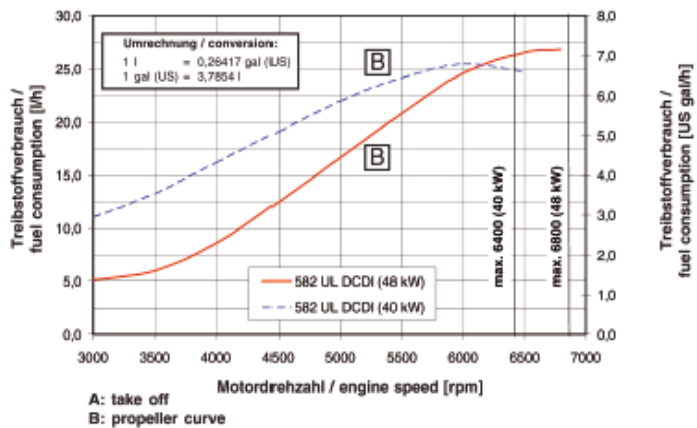
MOTORLEISTUNG / ENGINE PERFORMANCE



MOTORDREHMOMENT/ ENGINE TORQUE



TREIBSTOFFVERBRAUCH / FUEL CONSUMPTION

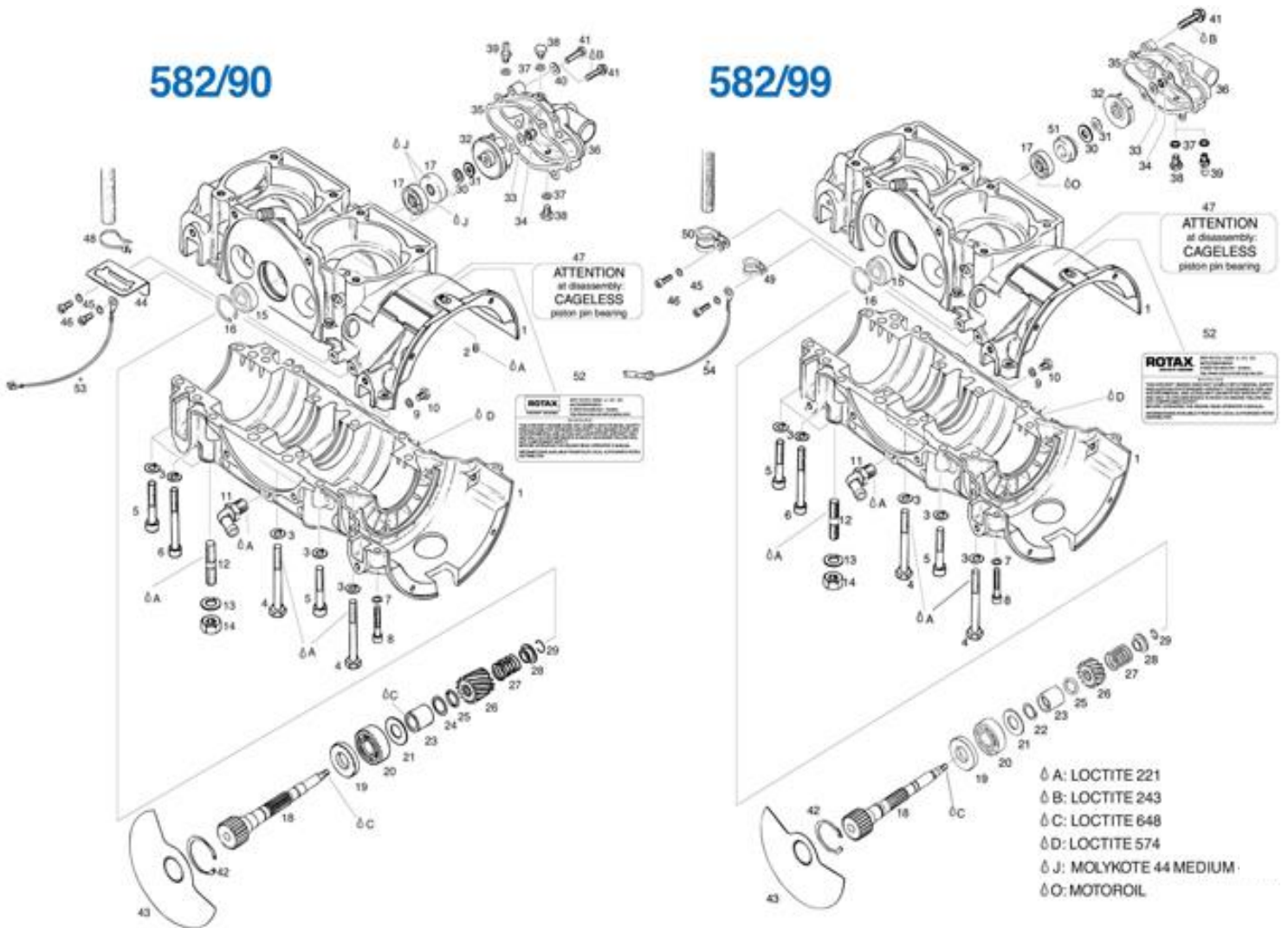


This engine is for use in experimental and ultralight uncertified aircraft only and only in circumstances in which an engine failure will not compromise safety. Before operating the engine read operator's manual. Information is available from your local authorized ROTAX®-distributor.

BRP-Powertrain GmbH & Co. KG. BRP-Powertrain GmbH & Co. KG reserves the right at anytime to discontinue or change specifications, prices, designs, features, models or equipment without incurring obligation. Engine performance may vary depending on, among other things, general conditions, ambient temperature and altitude.

★ROTAX 582 Parts

★ROTAX 582 UL ENGINE CRANKCASE, ROTARY VALVE DRIVE, WATER PUMP PARTS



FOR CHART BELOW:

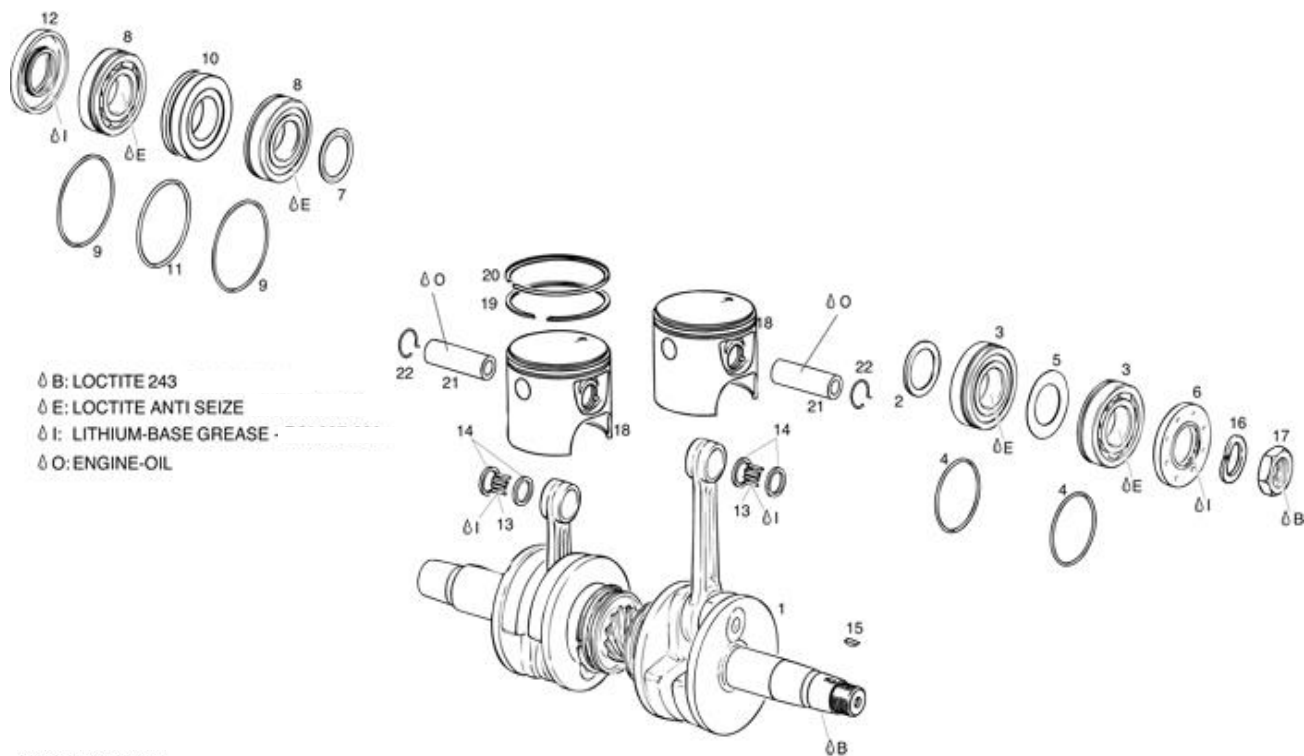
- a ROTARY VALVE FOR CONFIGURATION WITH ROTARY SEAL (582 UL DCDI MOD. 99).
- b THE CIRCLIP MUST BE POSITIONED AT THE INNER GROOVE ONLY (582 UL DCDI MOD. 99).
- c UP TO ENGINE S/N - 582 UL MOD. 90: 4,172.691 (SEE ALSO SI-08-1994)
- d FROM ENGINE S/N - 582 UL MOD. 90: 4,172.692 (SEE ALSO SI-08-1994)
- e CRANKCASE INCLUDING ROTARY VALVE DRIVE, CONFIGURATION WITH ROTARY SEAL MODEL 99

No.	Status	Part Number	Description	Qty Mod. 90	Qty Mod. 99
1-12		888-471	CRANKCASE-ASSY.		1
1-29 / 42		888-476	CRANKCASE-ASSY. W/ROTARY VALVE DR.	1e	1e
2		940-900	SCREW M5X6		1
3		945-752	LOCK WASHER A8	14	14
4		841-301	HEX. SCREW M8X65	6	6
5		841-561	ALLEN SCREW M8X45	6	6
6		841-831	ALLEN SCREW M8X75	2	2
7		945-751	LOCK WASHER A6 DIN 128	2	2
8		241-811	ALLEN SCREW M6X35 DIN 912	2	2
9 / 37		230-415	GASKET RING A 6X10 DIN 7603	1	1
10		240-771	HEX.SCREW M6X10	1	1
11	N	922-242	ANGULAR TUBE 1/4-18NPT	1	1
12		940-190	STUD M10X29/20	4	4
13		945-753	LOCK WASHER A10	4	4
14		242-091	HEX. NUT M10	4	4
15		932-797	B. BEARING 6201-Z, 12-32-10	1	1
16		245-420	RETAINING RING 32X1,2	1	1
17		850-711	OIL SEAL 10X30X8	2	1
18		937-969	ROTARY VALVE SHAFT	1	
18		837-243	ROTARY VALVE SHAFT		1a
19		930-580	OIL SEAL 20X40X7	1	1
20		932-032	BALL BEARING 6203 TVH C3,17-40-12	1	1
21		827-510	SHIM 15,3/32,5/0,5	1	
21		227-439	SHIM 17,2/32,5/1,5		1
23		847-280	SPACER 15,2/22/24,5	1	
23		847-282	SPACER		1
24		927-440	SHIM 15,1/22,5/0,5	1	

No.	Status	Part Number	Description	Qty Mod. 90	Qty Mod. 99
26		935-731	ROTARY VALVE GEAR 14 T.	1	
26		935-736	ROTARY VALVE GEAR 14 T.		1
27		938-810	COMPRESSION SPRING 25,1 MM	1	1
28		827-430	SPRING HOLDING CUP	1	1
29		845-160	CIRCLIP 12	1	1b
30		227-945	THRUST WASHER 8,1/15/0,5	1	1
31		227-155	FRICTION WASHER	1	1
32		922-036	IMPELLER	1	1
33		244-211	WASHER 6,4 DIN 134	1	1
34		842-042	LOCK NUT M6	1	1
35		831-616	GASKET	1	1
36		222-388	WATER PUMP HOUSING	1	
36		922-503	WATER PUMP HOUSING		1
38		841-580	HEX. SCREW M6X8	2	1
39	N	940-551	HOSE NIPPLE M6	1	1
41		841-540	TAPTITE-SCREW M6X25	4c	
41		240-036	HEX. SCREW M6X25 DIN 933	4d	
41		240-031	HEX. SCREW M6X25	4	
42		945-880	RETAINING RING 40X1,75	1	1
43		924-504	ROTARY VALVE 132 DEGR.,	1	1
44		853-322	RECEPTACLE	1	
46		840-511	ALLEN SCREW M5X16	2	2
47		897-280	CAGELESS-LABEL	1	1
48		866-710	CLAMP 142X2,5 MM	1	
49		851-111	CABLE CLAMP 8/M5		1
50		851-113	CLUMP 18/M5		1
51		650-370	ROTARY SEAL		1
52		897-501	RED WARNING LABEL	1	1
53		865-993	MASS CABLE	1	

★ROTAX 582 Parts

★ROTAX 582 UL ENGINE CRANKCASE,MAIN BEARINGS,PISTONS PARTS



FOR CHART BELOW:

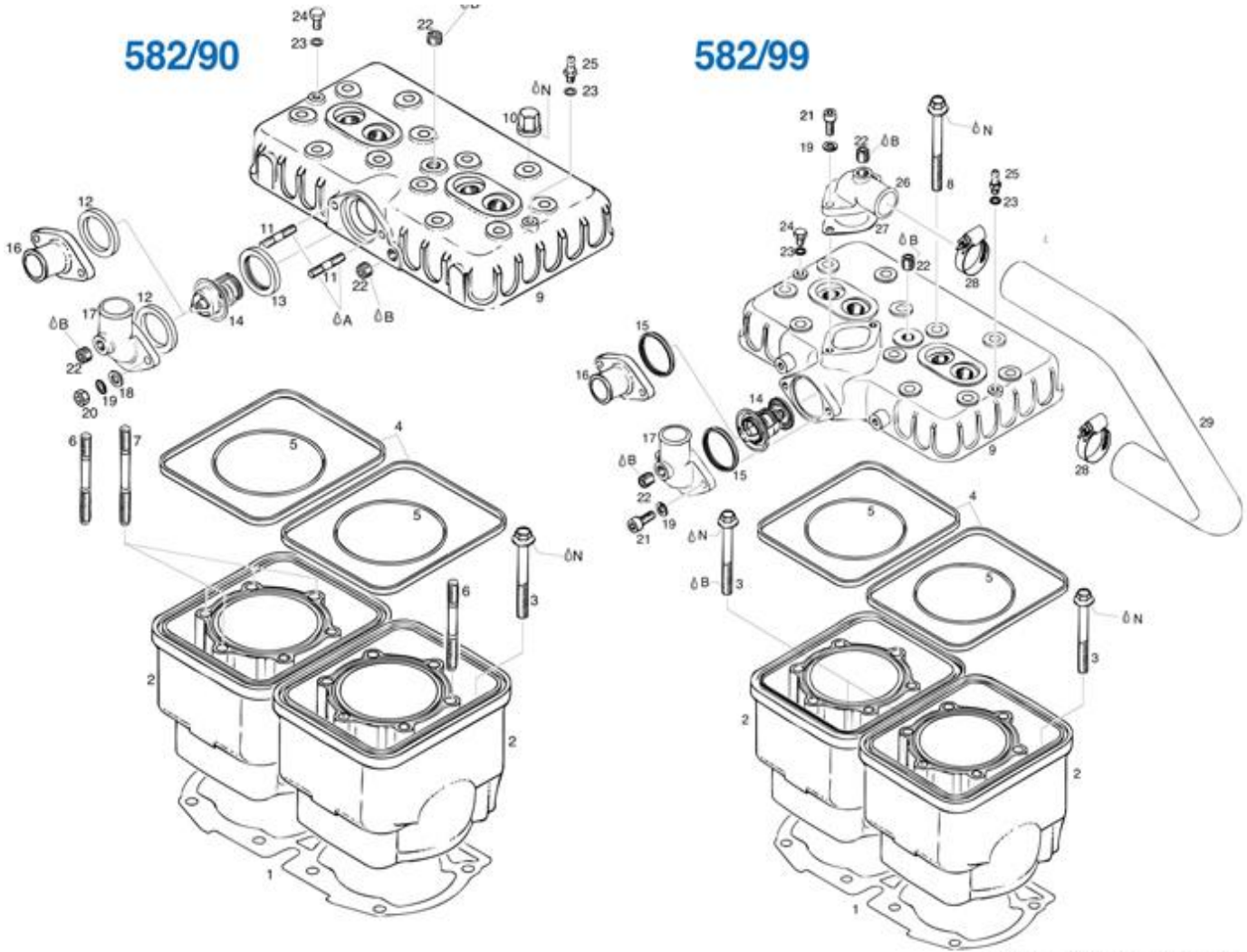
- a FROM ENGINE S/N 582 UL MOD. 90: 5,236.549 PISTON FOR MONOHOOK CIRCLIP CONFIGURATION (SEE ALSO SI-2ST-001)
- b WITH 2 RINGS, STANDARD - RED 75,94 MM / GREEN 75,95 MM
- c WITH 2 RINGS, 1ST OVERSIZE - RED 76,19 MM / GREEN 76,20 MM
- d WITH 2 RINGS, 2ND OVERSIZE - RED 76,44 MM / GREEN 76,45 MM
- e STANDARD SIZE
- f 1ST OVERSIZE
- g 2ND OVERSIZE
- h IN USE WITH PISTON PART NO. 888590 (SEE ALSO SI-2ST-001)
- i NOTICE USE ONLY ONCE.

No.	Status	Part Number	Description	Qty Mod. 90	Qty Mod. 99
1-15		887-051	CRANKSHAFT ASSY.	1	1
2	N	827-441	SPACER RING 30,5/42/2	1	1
3		832-209	B. BEARING 6206 N TVH, 30-62-16	2	2
4		830-355	O-RING 49,2-1,8	2	2
5		827-715	STOP SHIM 30,4/51/1	1	1
6		830-748	OIL SEAL 30X62X7/7,5	1	1
7		827-760	DISTANCE RING 35,5/47/2	1	1
8		832-231	B. BEARING 6207N TNH C3 35-72-17	2	2
9		250-165	O-RING 64-2	2	2
10		830-293	LABYRINTH SLEEVE	1	1
11		830-370	O-RING 63-2,5	1	1
12		831-950	OIL SEAL 35X72X7/8,5	1	1
13-14		832-320	CAGEL. NEEDLE BEARING 18X22X23	2	2
14		827-465	THRUST WASHER 18/21,7/2,5	4	4
15		246-055	WOODRUFF KEY 3X3,7 DIN 6888	1	1
16		945-759	LOCK WASHER 22	1	1

No.	Status	Part Number	Description	Qty Mod. 90	Qty Mod. 99
17	N	842-239	HEX. NUT M22X1,5	1	1
18-20		15-08211	PISTON ASSY. 75.94 MM RED DOT	2ab	2ab
18-20		15-02481	PISTON ASSY. 75.95 MM GREEN DOT	2ab	2ab
18-20		15-02482	PISTON ASSY. 76.19 MM RED DOT	2ac	2ac
18-20		15-08308	PISTON ASSY. 76.20 MM GREEN DOT	2ac	2ac
18-20		15-02483	PISTON ASSY. 76.44 MM RED DOT	2ad	2ad
18-20		15-08309	PISTON ASSY. 76.45 MM GREEN DOT	2ad	2ad
19		215-200	RECTANGULAR RING 76,00 MM	2e	2e
19		215-201	RECTANGULAR RING 76,25 MM	2f	2f
19		215-202	RECTANGULAR RING 76,5 MM	2g	2g
20		915-820	SEMI-TRAPEZ RING 76,0 MM	2e	2e
20		915-821	SEMI-TRAPEZ RING 76,25 MM	2f	2f
20		915-822	SEMI-TRAPEZ RING 76,5 MM	2g	2g
21		916-136	PISTON PIN 18X11X53,7	2	2
22		845-540	MONOHOOK CIRCLIP 18	4hi	4hi

★ROTAX 582 Parts

★ROTAX 582 UL ENGINE CYLINDER,CYLINDER HEAD PARTS



FOR CHART BELOW:

- a RED 76,00 MM - 76,01 MM / GREEN 76,01 MM - 76,02 MM
- b FOR CONFIGURATION WITHOUT 2-PIECE RADIATOR.
- c FOR CONFIGURATION WITH 2-PIECE RADIATOR.
- d USABLE FOR CONFIGURATION WITH- AND WITHOUT 2-PIECE RADIATOR.

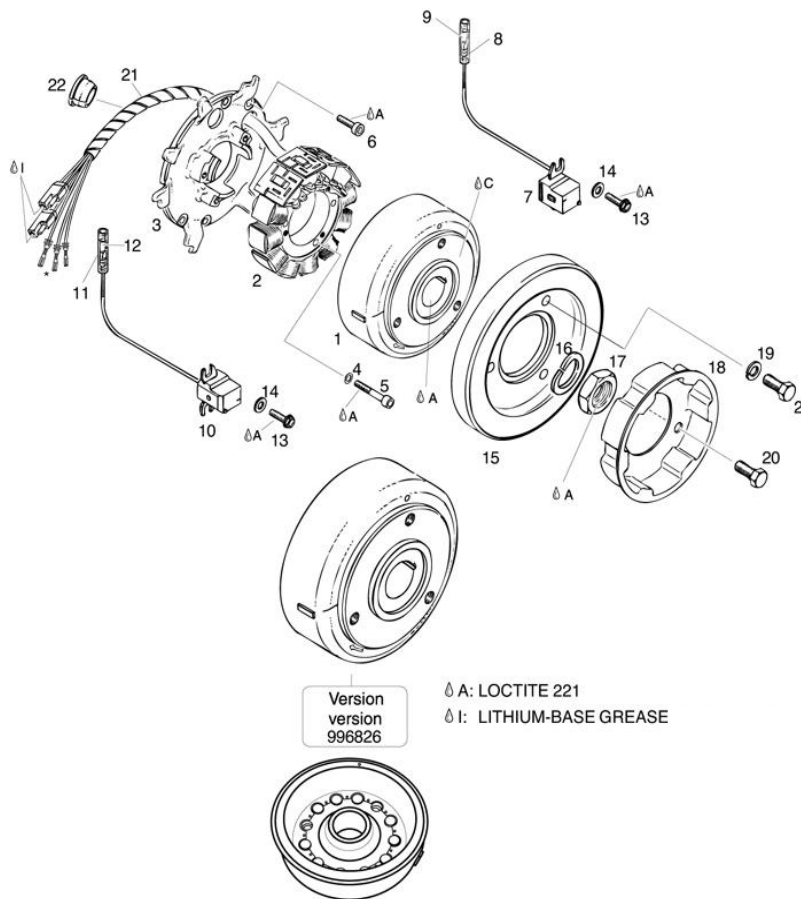
- Ø A: LOCTITE 221
- Ø B: LOCTITE 243
- Ø N: MULTI-PURPOSE GREASE LZ

No.	Status	Part Number	Description	Qty Mod. 90	Qty Mod. 99
1		850-775	DOUBLE GASKET 0,5 MM	1	1
2		913-448	CYLINDER WITH SLEEVE	2a	2a
3		640-951	COLLAR HEX.SCREW M8X68,5 SW 11	8	8
4		850-040	RUBBER RING 152,5X2,5X5	2	2
5		850-540	O-RING 83X2	2	2
6		941-390	STUD M8X79	12b/8c	
7		240-490	STUD M8X84	4c	
8		841-308	COLLAR HEX.SCREW M8X65 SW11		12d
9		913-310	CYLINDER HEAD	1	
9		913-845	CYLINDER HEAD		1
10		842-471	COLLAR CAP NUT M8	12	
11		941-080	STUD M6X20/10	2	
12		230-980	GASKET	1	
13-14		222-014	THERMOSTAT WITH GASKET	1	
13		230-800	GASKET	1	

No.	Status	Part Number	Description	Qty Mod. 90	Qty Mod. 99
14-15		922-511	THERMOSTAT WITH GASKET		1
16		922-025	WATER OUTLET SOCKET	1	1
17 / 26		922-061	BENT OUTLET SOCKET	1	1
18		244-211	WASHER 6,4 DIN 134	2	
19		945-751	LOCK WASHER A6 DIN 128	2	2
20		242-211	HEX.NUT M6	2	2
21	N	241-939	ALLEN SCREW M6X20 DIN 912		2
22		240-483	PLUG SCREW 1/8-27NPT	3	3
23		230-415	SEALING RING A 6X10 DIN 7603	2	2
24		841-580	HEX. SCREW M6X8	1	1
25	N	940-551	HOSE NIPPLE M6	1	1
27		850-338	GASKET		1
28		951-880	CLAMP 20-32		2
29		922-521	MOLDED HOSE_25/180 DEGREE		1

★ ROTAX 582 UL ENGINE DUCATI MAGNETO-GENERATOR 12V 170W

STARTING PULLEY PARTS



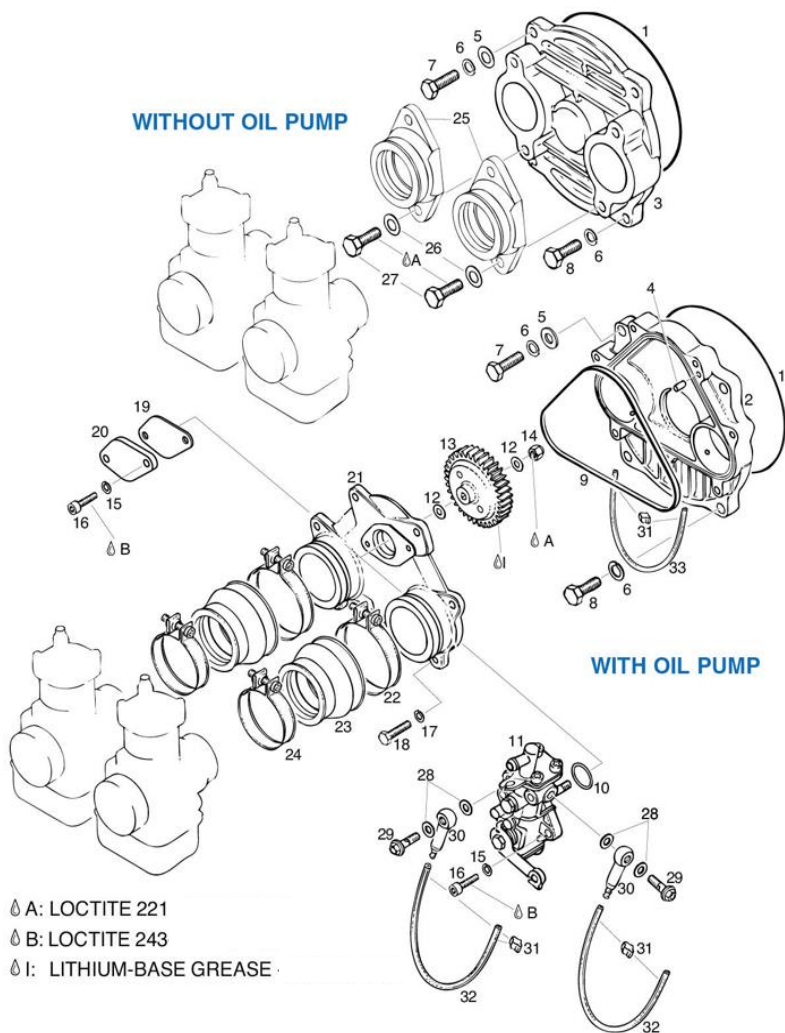
No.	Status	Part Number	Description	Qty Mod. 90	Qty Mod. 99
1		996-826	MAGNETO FLYWHEEL P12W170	1	1
2		996-849	COIL KIT	1	1
3		966-207	STATOR PLATE	1	1
5		940-880	ALLEN SCREW M5X30	3	3
6		641-521	TORX-ZYLINDER HEAD SCREW M5X16	2g	2g
7-9		965-769	PICKUP ASSY.	1b	1b
8 / 11		964-072	INSULATION SHEATH	1	1
9 / 12		964-067	FASTON CONNECTOR 3,96	1	1
10		965-761	PICK UP	1c	1c
13		941-925	TAPTITE SCREW M5X16	4	4
14		827-800	WASHER A 5,5 DIN 6902	4	4
15		965-497	HYDRO DAMPER ASSY.,	1a	1a
16		945-759	LOCK WASHER 22	1	1
17		842-239	HEX. NUT M22X1,5	1	1
18		852-422	STARTING PULLEY	1d	
18		852-410	STARTING PULLEY	1e	
18		852-411	STARTING PULLEY		1
19		945-752	LOCK WASHER A8	3g	
20		940-580	HEX.SCREW M8X16 DIN 933	3d	
20		940-591	HEX.SCREW M8X20	3e	3
21		966-060	SPIRAL HOSE 6,5X8,5X0,6 (SEE NOTES)	ARf	ARf
22		960-288	CABLE GROMMET 20,5/11	1	1

FOR CHART BELOW:

- a FROM ENGINE S/N - 582 UL DCDI MOD. 90: 4,015.239 / 582 UL DCDI MOD.99: AT SERIAL PRODUCTION
- b FOR IGNITON CIRCUIT 1
- c FOR IGNITON CIRCUIT 2
- d UP TO ENGINE S/N - 582 UL DCDI MOD. 90: 4,015.238
- e FROM ENGINE S/N - 582 UL DCDI MOD. 90: 4,015.239
- f IN A ROLL.
- g WITHOUT REWIND STARTER

★ROTAX 582 Parts

★ROTAX 582 UL ENGINE ROTARY VALVE COVER,OIL PUMP DRIVE, OIL PUMP PARTS



FOR CHART BELOW:

- a FOR CONFIGURATION WITHOUT OILPUMP
- b IN A ROLL
- c FROM ENGINE S/N: 5,381.289

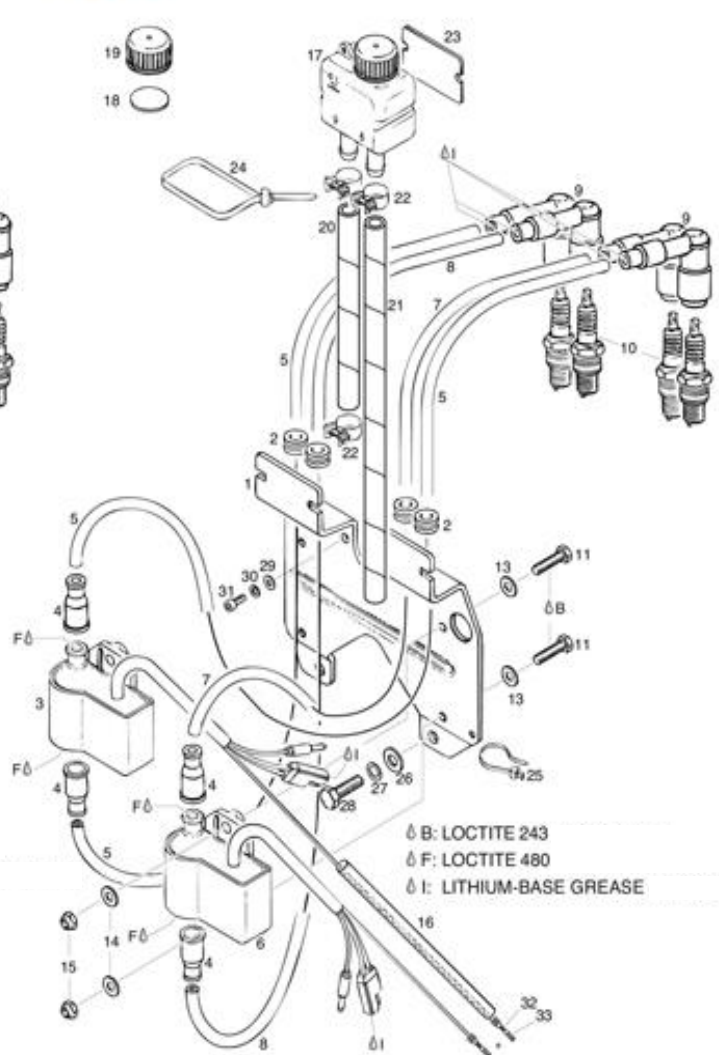
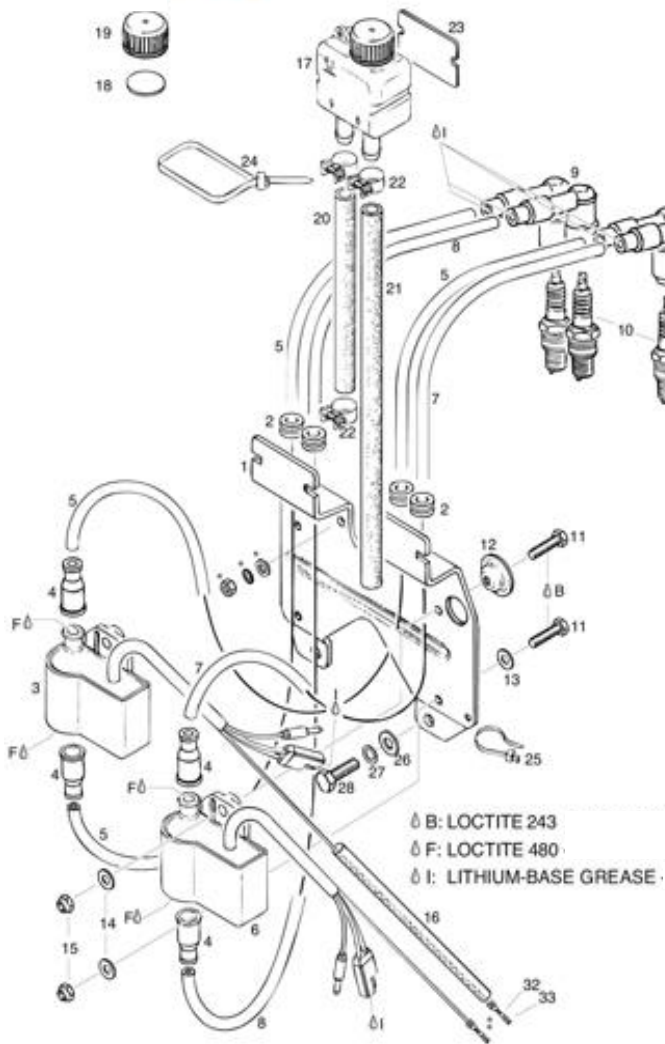
No.	Status	Part Number	Description	Qty Mod. 90	Qty Mod. 99
1		831-360	O-RING 132-1,7	1	1
2		811-940	ROTARY VALVE COVER ASSY	1c	1c
3		912-949	ROTARY VALVE COVER	1a	
4		929-560	DOWEL TUBE 2X8	1	1
5 / 26		250-311	WASHER 8,4 DIN 125	2	2
6		945-752	LOCK WASHER A8	4	4
7		240-276	HEX. SCREW M8X25	2	2
8 / 27		940-591	HEX.SCREW M8X20	2	2
9		831-700	RUBBER RING 126X1,5X3,5	1	1
10		230-370	O-RING 18-1,3	1	1
11		995-527	OIL PUMP ASSY.,	1	1
12		927-945	WASHER 6,2/12/1	2	2
13		935-940	OIL PUMP GEAR 44 T.,	1	1
14		842-042	LOCK NUT M6	1	1

No.	Status	Part Number	Description	Qty Mod. 90	Qty Mod. 99
16		240-761	SLOTTED HEAD SCREW M5X16	2	
16 / 18		940-561	HEX.SCREW M6X20		2
17		945-751	LOCK WASHER A6 DIN 128	7	7
19		931-566	GASKET	1a	1a
20		810-825	COVER PLATE	1a	1a
21		910-320	PUMP MOUNTING FLANGE	1	1
22		851-065	CLAMP 62	2	2
23		867-696	CARBURETOR SOCKET	2	2
24		951-400	HOSE CLAMP 53	2	2
25		267-785	RUBBER FLANGE CPL.	2	
28		227-500	GASKET RING 6,2/12/1	4	4
29		241-830	BANJO BOLT M6X16	2	2
30		956-010	CHECK VALVE ASSY.,	2	2
31		853-840	CLAMP 3-5 MM	AR	AR
32-33		960-040	OIL LINE 2,2+/-0,1X4,3+0,4 (SEE NOTES)	ARb	ARb

★ROTAX 582 UL ENGINE OIL TANK,IGNITION COILS,SUPPORT PLATE PARTS

582/90

582/99



FOR CHART BELOW:

- a IN A ROLL
- b THE FIX THE CABLE HARNESS
- c FOR IGNITON CIRCUIT 1
- d FOR IGNITON CIRCUIT 2

No.	Status	Part Number	Description	Qty Mod. 90	Qty Mod. 99
1		951-617	SUPPORTING PLATE		1
2		960-445	GROMMET	4	4
3		966-462	ELECTRONIC BOX	1a	1a
4		960-550	PROTECTION CAP	4	4
5,7,8		965-153	IGNITION CABLE 1,5/7 MM (SEE NOTES)	ARd	ARd
6		966-467	ELECTRONIC BOX (SEE NOTES)	1b	1b
9		866-705	SUPPRESSED SPARK PLUG CONNECTOR	4	4
10		897-055	SPARK PLUG 14 MM, NGK BR 8 ES	4	4
11		240-036	HEX. SCREW M6X25 DIN 933	4	4
12		827-815	DISTANCE CAP	1	
13,14 - 29		244-211	WASHER 6,4 DIN 134	2	4
15		842-042	LOCK NUT M6	4	4
16		960-187	PROTECTION HOSE 170 MM	1	1
17-19		956-240	OIL TANK ASSY.,	1	1
18		850-350	RUBBER GASKET 26,5 MM	1	1

No.	Status	Part Number	Description	Qty Mod. 90	Qty Mod. 99
19		956-250	OIL TANK CAP S 103/2D	1	1
20-21		956-230	LOW PRESSURE HOSE GC 9X14 (SEE NOTES)	ARd	
20-21		956-140	LOW PRESSURE HOSE OLN(E) (SEE NOTES)		ARd
22		951-260	CLAMP 14	4	
22		853-726	CLAMP MINI 16 W1		4
23		860-425	RUBBER SPACER	1	1
24		951-500	CLAMP 381X4,8 MM	1	1
25		866-710	CLAMP 142X2,5 MM	1c	1c
26		250-311	WASHER 8,4 DIN 125	2	2
27		945-752	LOCK WASHER A8	2	2
28		240-276	HEX. SCREW M8X25	2	2
30		945-751	LOCK WASHER A6 DIN 128		2
31		241-236	ALLEN SCREW M6X16		2
32		260-130	CABLE GROMMET		2
33		265-275	FASTON CONNECTOR		2