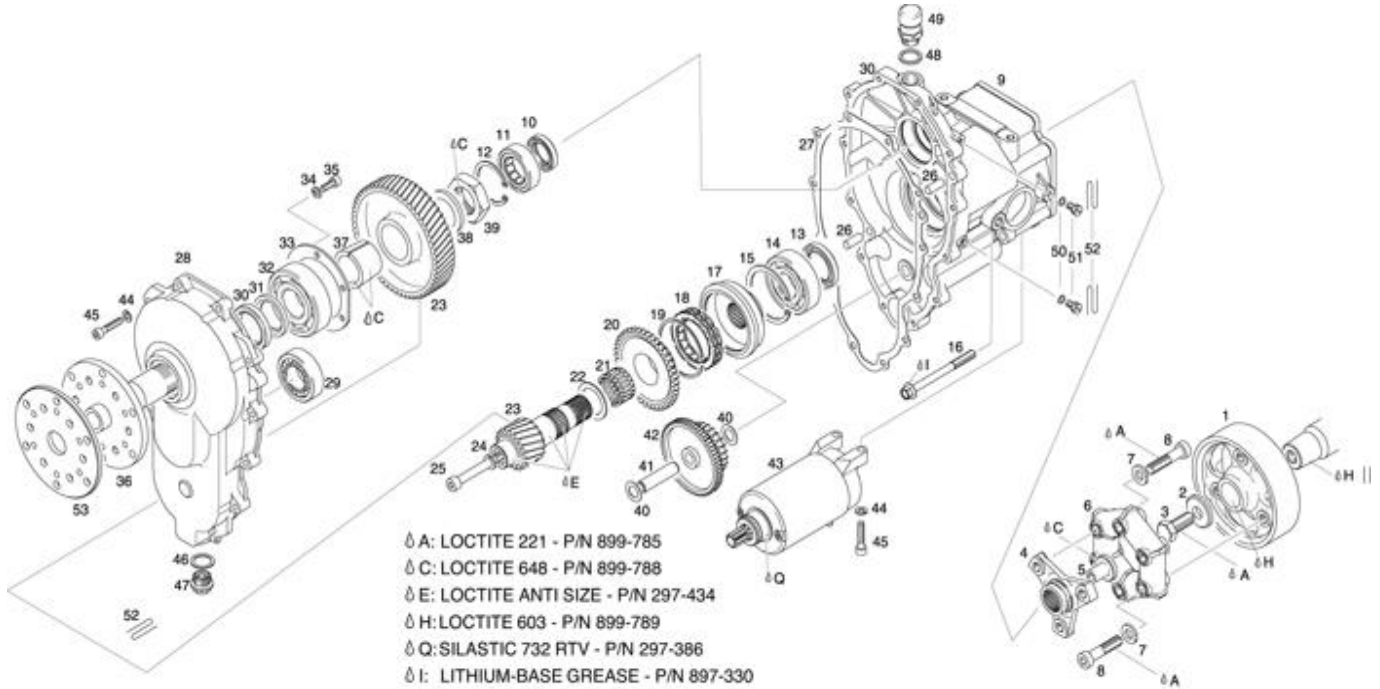


02<ROTAX GEAR BOX>

# Rotax Model "E" Gearbox

- スターター付 Eタイプ ギア ボックス
- ギア比(2.62/3.00/3.47/4.00)

- ボルトパターン(75mmX8mm/75mmX1/4-18")
- 正立・倒立 兼用
- コンプリート価格            円

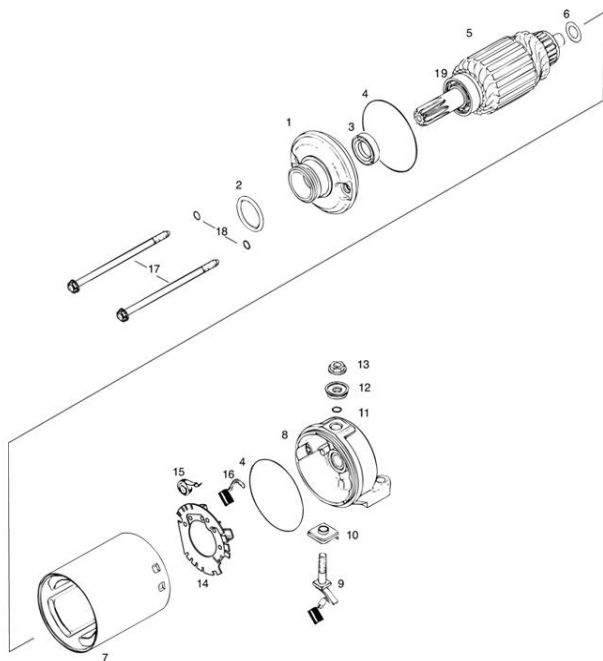


**FOR CHART BELOW:**

- a REPLACE LAYSHAFT GEAR 55 T AND PINION SHAFT 21 T ONLY TOGETHER.
- b REPLACE LAYSHAFT GEAR 57 T AND PINION SHAFT 19 T ONLY TOGETHER.
- c REPLACE LAYSHAFT GEAR 59 T AND PINION SHAFT 17 T ONLY TOGETHER.
- d REPLACE LAYSHAFT GEAR 60 T AND PINION SHAFT 15 T ONLY TOGETHER.
- e NOTICE LEFT-HAND THREAD.
- f COUPLING FLANGE 958971 AND SEALING RING 950084 HAS TO BE USED AS A SET.
- g COUPLING FLANGE 958970 AND SEALING RING 950085 HAS TO BE USED AS A SET.
- h GEAR SET AND SPLITTED CONE SLEEVE 847757 HAS TO BE USED TOGETHER! - NOTE: INCLUDED STARTER RELAY.

No.	商品番号	品名	数	価格	No.	商品番号	品名	数	価格
1	958-981	Flywheel	1	¥ 26,780	28	810-361	Gear Cover	1	¥ 106,740
2	827-786	Washer	1	¥ 1,990	29	232-243	Bearing	1	¥ 17,130
3	841-651	Hex Screw	1	¥ 930	30	930-715	Oil Seal 35x47x7	1	¥ 4,100
4	958-971	Coupling Flange	1	¥ 31,060	31	944-111	Distance Ring	1	¥ 3,160
5	842-661	Nut 8mm	1	¥ 3,650	32	932-570	Ball Bearing 6306	1	¥ 9,360
6	958-964	Rubber Coupling	1	¥ 24,780	33	944-106	Shim	1	¥ 3,620
7	944-120	Washer	6	¥ 600	34	445-330	Lockwasher 6	6	¥ 60
8	841-820	Allen Screw 10x45	6	¥ 570	35	241-236	Allen Screw 6x16	6	¥ 90
9	810-350	Gearbox Housing	1	¥ 153,880	36	837-185	Propshaft	1	¥ 57,120
10	930-675	Oil Seal 25x38x7	1	¥ 3,380	37	847-757	Split Cone Sleeve	1	¥ 16,670
11	232-286	Roller Bearing	1	¥ 14,970	38	926-200	Massive Washer	1	¥ 960
12	945-690	Retaining Ring	1	¥ 510	39	842-579	Hex Nut M30x1.5 LH	1	¥ 2,230
13	950-084	Oil Seal 32x47x7	1	¥ 9,280	40	227-450	Thrust Washer	2	¥ 420
14	932-820	Ball Bearing	1	¥ 7,770	41	837-302	Idle Gear Shaft	1	¥ 3,530
15	445-070	Retaining Ring	1	¥ 650	42	834-290	Idle Gear 62/25	1	¥ 38,450
16	440-366	Screw 8x90	8	¥ 720	43	293-153	Electric Starter Assy	1	¥ 99,010
17	852-430	Sprag Clutch Housing	1	¥ 35,910	44	945-751	Lockwasher 6mm	14	¥ 30
18	259-077	Sprag Clutch	1	¥ 37,270	45	840-880	Allen Screw 6x30	14	¥ 80
19	245-620	Snap Ring 62	1	¥ 670	46	552-280	Gasket Ring	1	¥ 360
20	834-280	Free Wheel Gear 42t	1	¥ 34,610	47	840-270	Magnetic Plug	1	¥ 3,830
21	832-410	Needle Cage	1	¥ 7,810	48	931-200	Gasket Ring	1	¥ 420
22	427-236	Thrust Washer	req.	¥ 470	49	941-115	Air Vent Screw	1	¥ 2,360
23	886-750	2.62 Gear Ser	1	¥ 81,380	50	230-415	Gasket Ring	2	¥ 190
23	886-753	3.00 Gear Set	1	¥ 81,380	51	841-781	Capstan Screw 6x10	2	¥ 730
23	886-755	3.47 Gear Set	1	¥ 81,380	52		Safety Wire	req.	¥
23	886-756	4.00 Gear Set	1	¥ 81,380	53	944-140	Cover Washer	1	¥ 9,170
24	845-310	Lockwasher	1	¥ 60	54		Lithium Grease	req.	¥
26	929-940	Pin 8x20	2	¥ 530	55	67-ASL-01	Anti-Seize(28g)	req.	¥ 1,120
27	950-215	Gasket	1	¥ 2,160	56		Loctite	req.	¥

# セルモーター部品



FOR CHART BELOW:  
 a BRUSH, NOT AVAILABLE AS SPARE PART, USE BRUSH HOLDER ASSY. 866891.  
 \* CALL FOR PRICING!

No.	商品番号	品名	数	価格
1-18	293-153	Starter Motor Assy . . . . .	1	¥99,010
1	965-497	Hydro Damper Assy . . . . .	1	¥45,960
2	250-140	O-Ring . . . . .	1	¥ 930
3	250-130	Oil Seal . . . . .	1	¥ 2,980
4	850-500	O-Ring . . . . .	1	¥ 1,480
6	827-600	Shim . . . . .	1	¥ 650
7	264-151	Stator Yoke Assy . . . . .	1	¥ 33,360
9	264-184	Carbon Brush Assy . . . . .	1	¥14,310
10	260-810	Connector Sheath . . . . .	1	¥ 1,260
11	230-530	O-Ring . . . . .	1	¥ 390
12	260-800	Connector Sheath . . . . .	1	¥ 1,080
13	242-780	Combined Nut . . . . .	1	¥ 530
14-16	866-891	Brush Holder . . . . .	1	¥ 9,170
17	241-137	Hex Collar Screw . . . . .	2	¥ 2,120
18	850-510	O-Ring . . . . .	2	¥ 490
19	232-260	Ball Bearing . . . . .	2	¥ 3,650